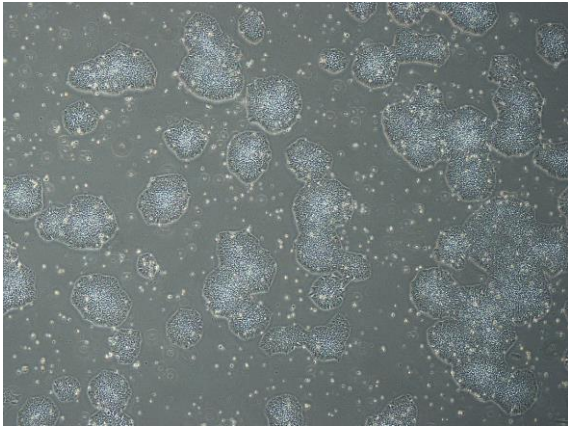


【 CiRA-j-1603 】 Morphology of iPSC colonies

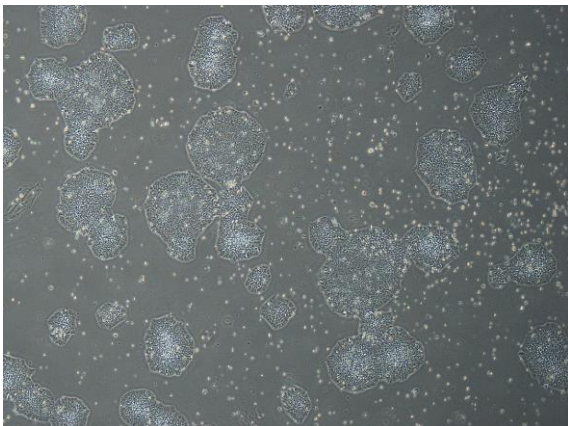
CiRA-j-1603-A: passage-3



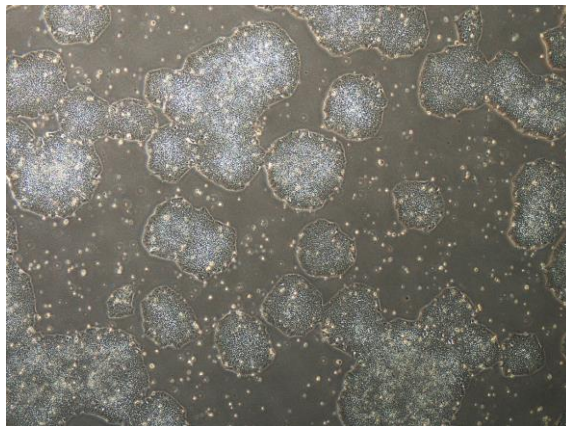
CiRA-j-1603-B: passage-3



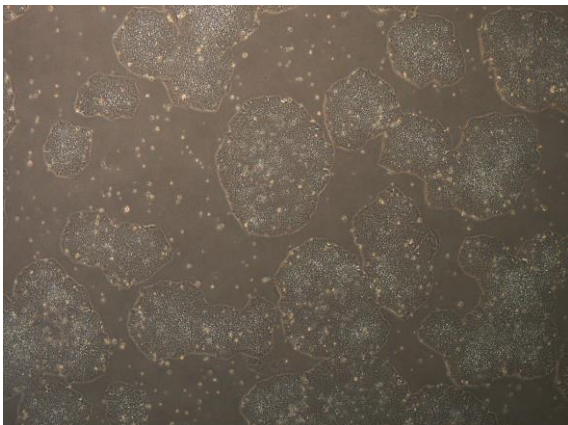
CiRA-j-1603-C: passage-3



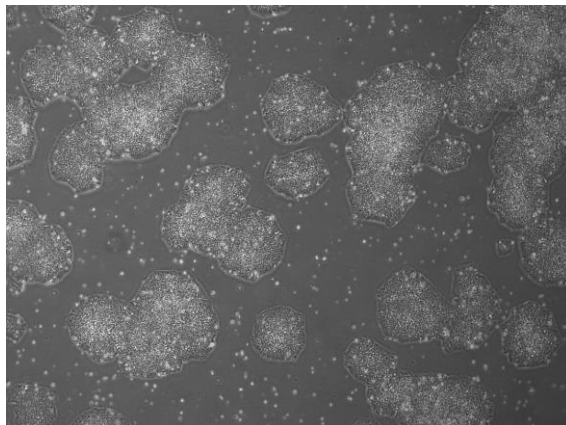
CiRA-j-1603-D: passage-3



CiRA-j-1603-E: passage-3



CiRA-j-1603-F: passage-3



(All images were captured at 4x magnification)